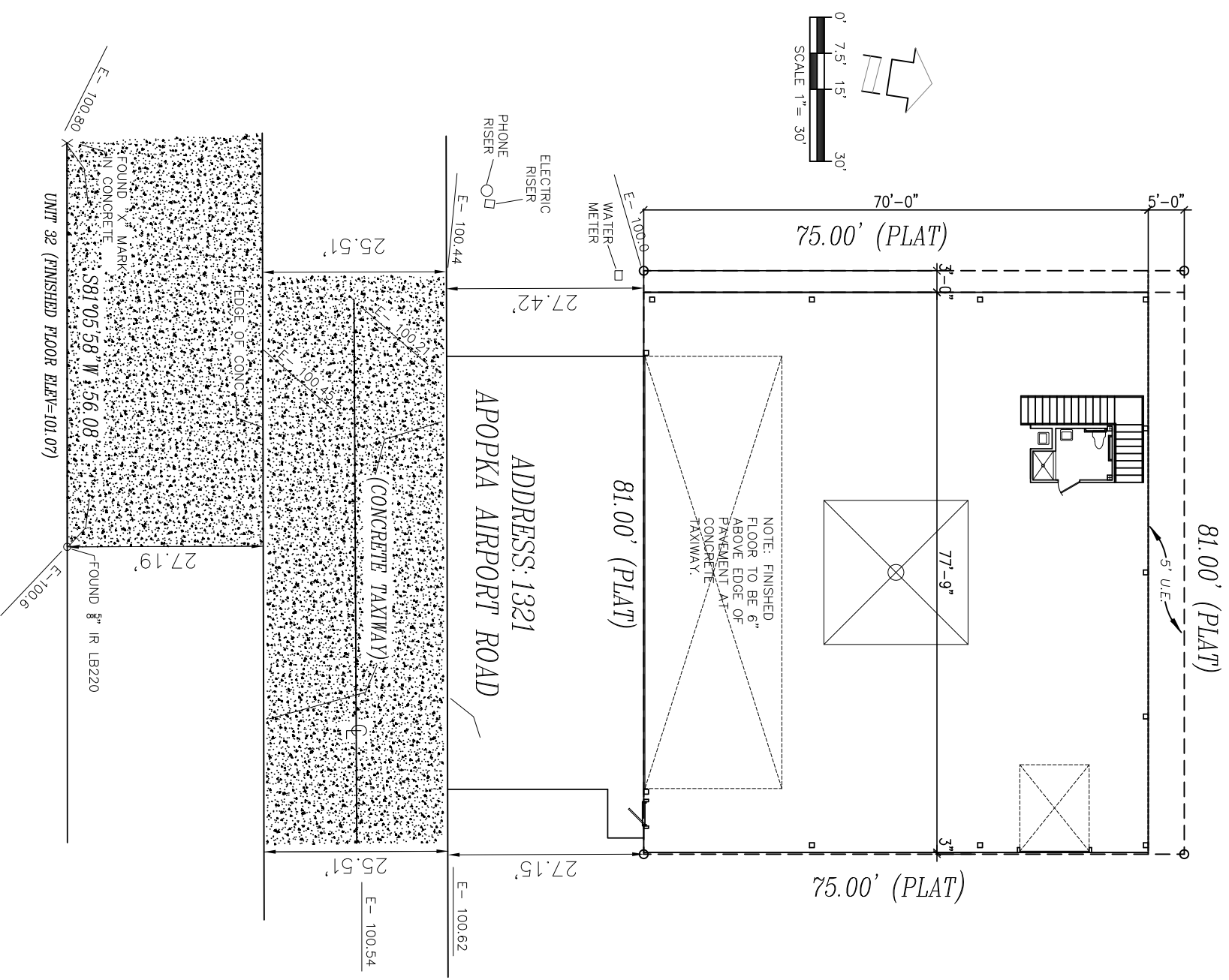
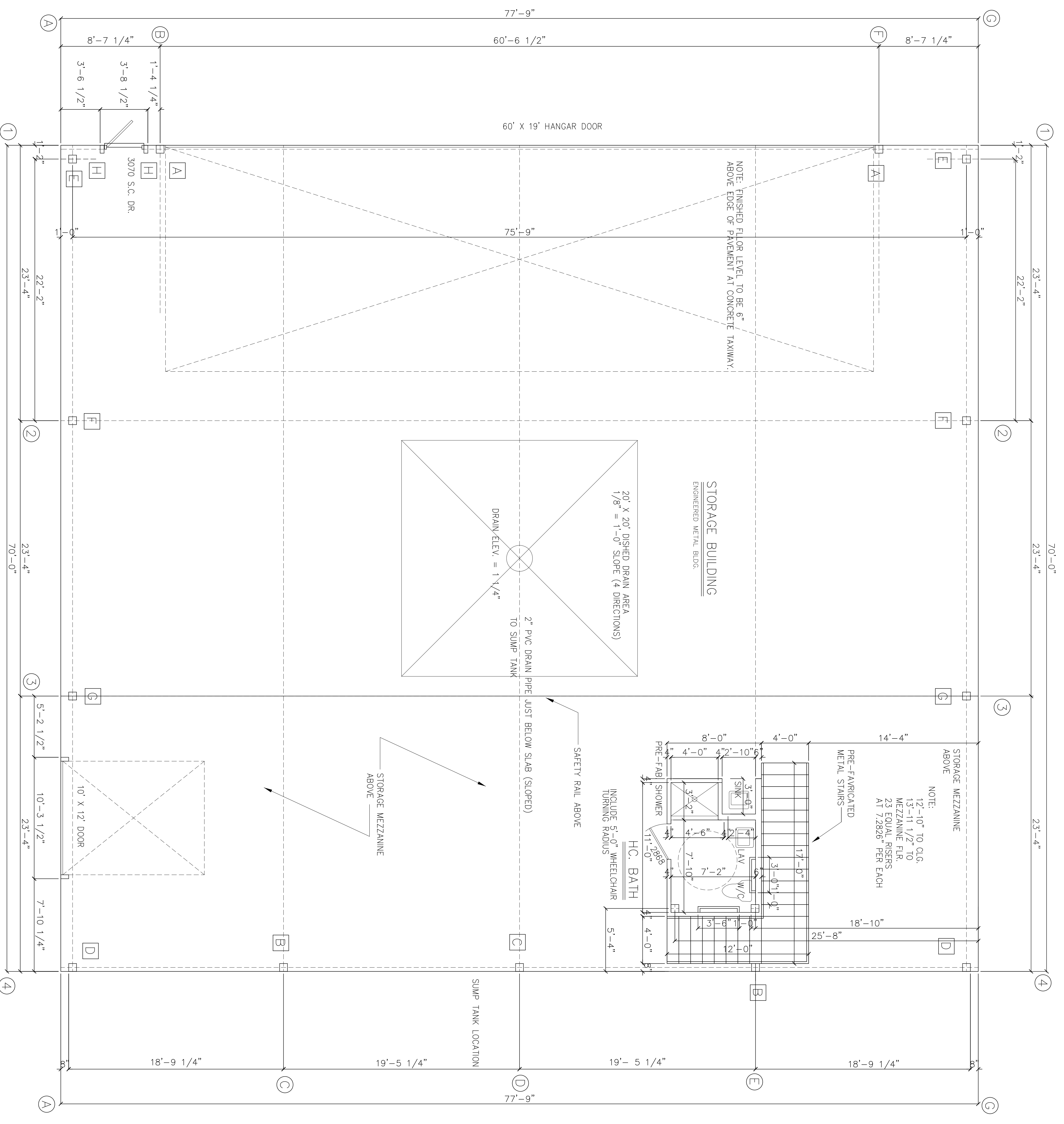


Description:
Unit 35, of ORLANDO-APOPKA AIRPORT, a Commercial Land Condominium,
according to the Declaration of Condominium thereof as recorded in
Official Records Book 7431, page 1846, and any amendments thereto, if
any, Public Records of Orange County, Florida, together with its undivided
share in the common elements.

PROPERTY ADDRESS: 1321 APOPKA AIRPORT ROAD, APOPKA, FL. 32712





77'-9"

60'-6 1/2"

75'-9"

20' X 20' DISHED DRAIN AREA
1/8" = 1'-0" SLOPE (4 DIRECTIONS)
DRAIN ELEV. = 1 1/4"
2" PVC DRAIN PIPE JUST BELOW SLAB (SLOPED)
TO SUMP TANK

STORAGE BUILDING
ENGINEERED METAL BLDG.

STORAGE MEZZANINE
ABOVE

NOTE:
12'-10" TO CLG.
13'-11 1/2" TO
MEZZANINE FLR.
23 EQUAL RISERS
AT 7.2826" PER EACH

HC. BATH
INCLUDE 5'-0" WHEELCHAIR
TURNING RADIUS

SAFETY RAIL ABOVE

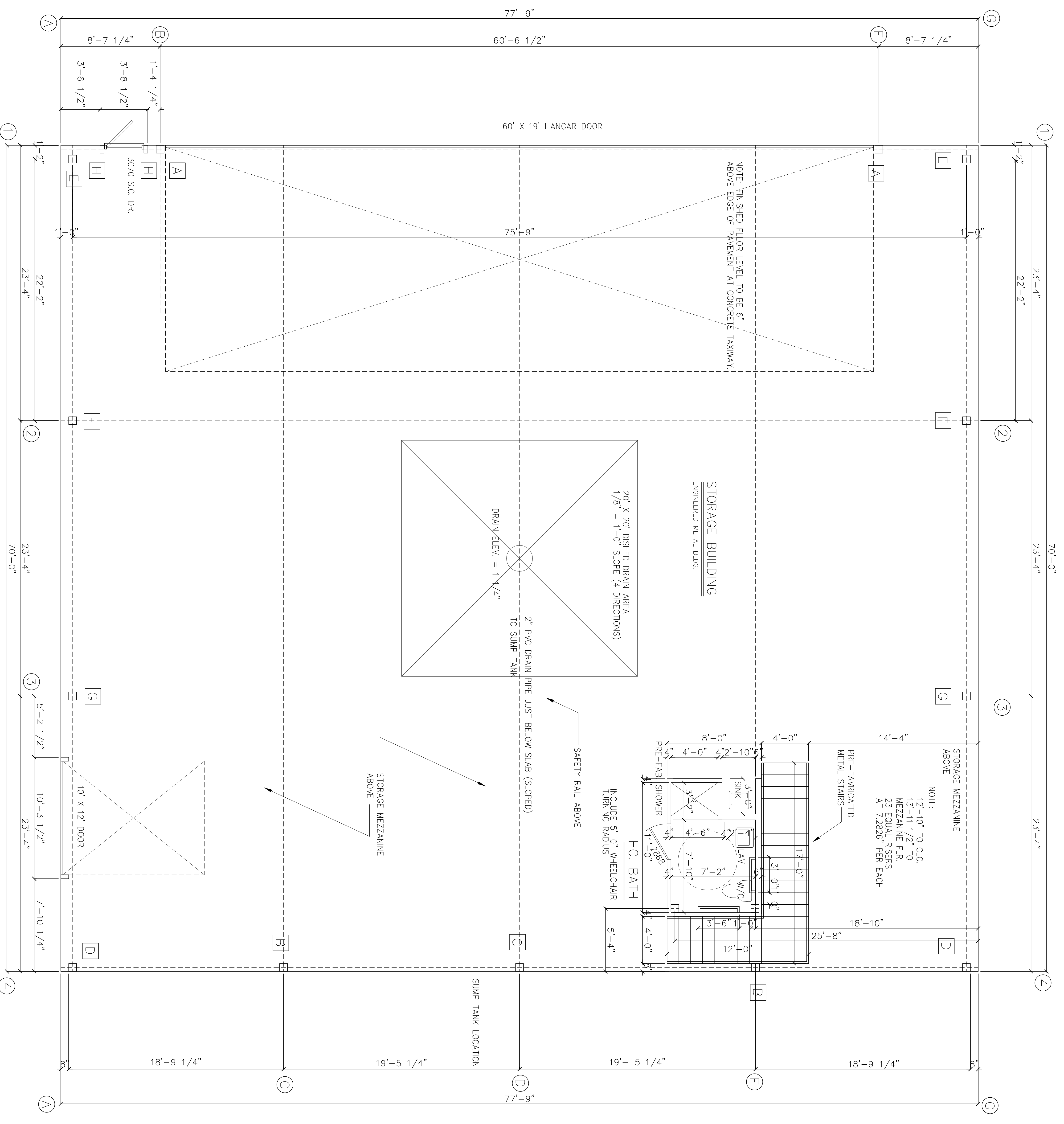
STORAGE MEZZANINE
ABOVE

SUMP TANK LOCATION

NOTE: FINISHED FLOOR LEVEL TO BE 6"
ABOVE EDGE OF PAVEMENT AT CONCRETE TAXIWAY.

60' X 19' HANGAR DOOR

3070 S.C. DR.



8'-7 1/4"

8'-7 1/4"

1'-4 1/4"

3'-8 1/2"

3'-6 1/2"

23'-4"

22'-2"

70'-0"

23'-4"

23'-4"

7'-10 1/4"

18'-9 1/4"

19'-5 1/4"

19'-5 1/4"

18'-9 1/4"

1

2

2

3

4

A

B

B

C

C

D

B

E

F

E

F

G

D

G

C

2

3

4

G

1

2

2

3

4

A

B

B

C

C

D

B

E

F

E

F

G

D

G

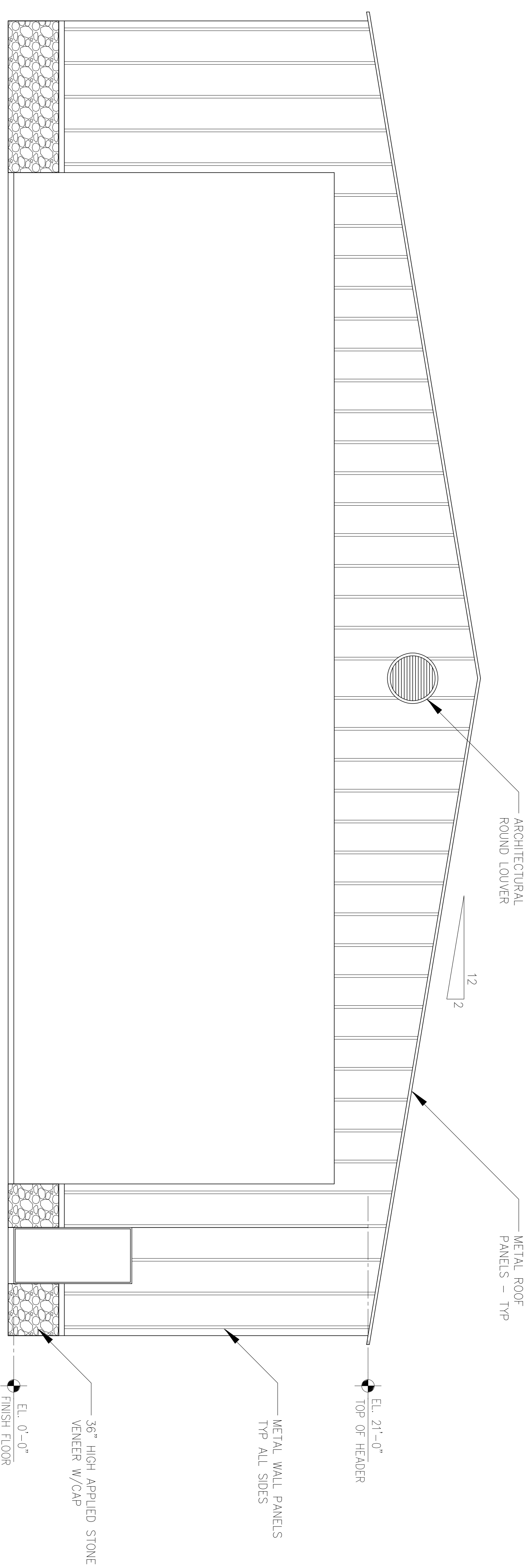
C

2

3

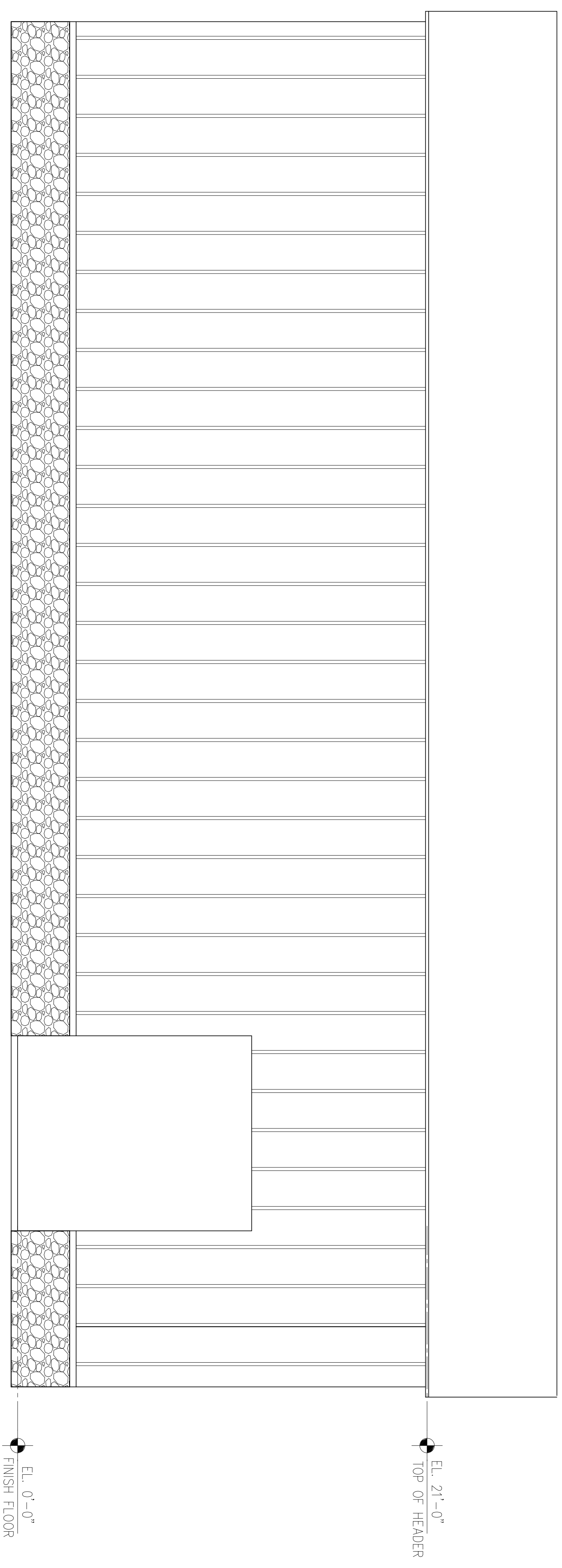
4

G



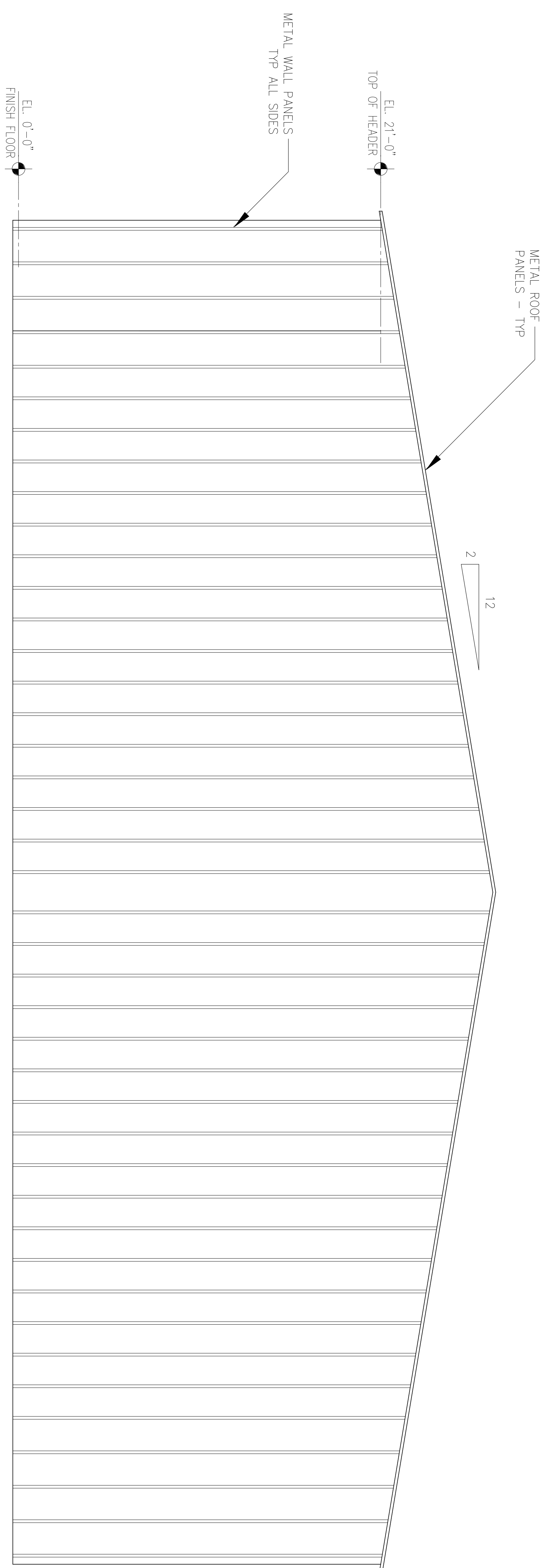
FRONT ELEVATION

1/4" = 1'-0" SCALE



RIGHT ELEVATION

SCALE: 1/4" = 1'-0"



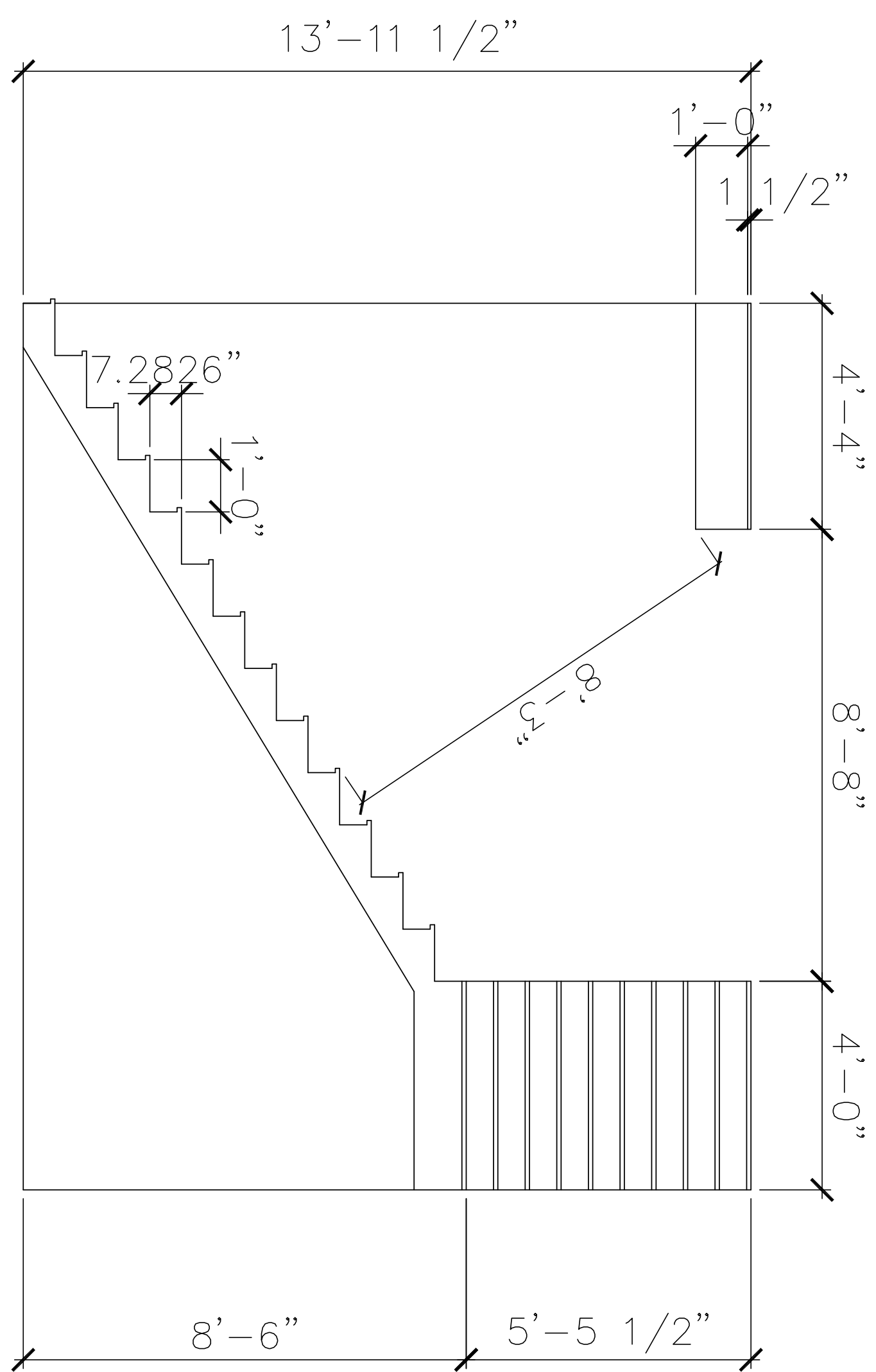
REAR ELEVATION

1/4" = 1'-0" SCALE



LEFT ELEVATION

SCALE: 1/4" = 1'-0"



12'-10" TO CLG.
 13'-11 1/2" TO
 MEZZANINE FLR.
 23 EQUAL RISERS
 AT 7.2826" PER EACH

